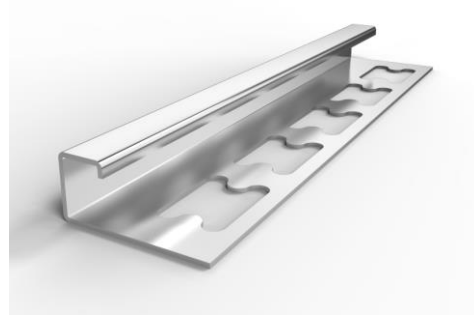
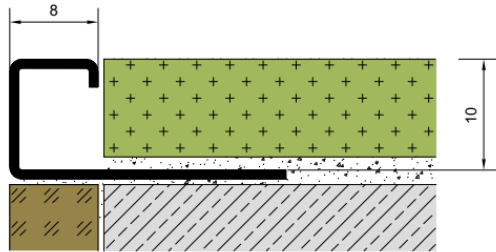


PRODUCT DATA SHEET
TILE TRIMS



PRODUCT DATA SHEET

TILE TRIM – BSG 0810 SS



GENERAL CHARACTERISTICS

Category	Finishing Profiles
Product	Tile Trim
Product Code	BSG 0810 SS
Type	Wide Brimmed
Applicable Areas	Floor and Wall
Visible Width	8,00 mm
Inner Height	10,00 mm
Standard Length	2,50 or 2,44 meters
Material	Stainless steel
Steel Grade	Grade 304 (Grade 316 optional)
Finish	Different finishes are available
Quantity	10 pcs / pack

✓ Asdekor Tile Trims are used at the junctions of tile to tile or tile to non-tile covered surfaces to protect external corners and ensure smooth finish.

✓ As well as protection feature, tile trims bring in the applied areas an aesthetic view with different colors and shorten the laying time for tiles by simplifying the alignment.

✓ Tile trims can be manufactured at different shapes, heights and colors.

STAINLESS STEEL COLORS

	SS01	Silver / Satine
	SS02	Gold / Matt
	SS03	Bronze / Matt
	SS04	Black / Matt
	SS05	Silver / Polished
	SS06	Gold / Polished
	SS07	Bronze / Polished
	SS08	Black / Polished
	SS21	Silver / Mirror Finish

STAINLESS STEEL CHEMICAL COMPOSITION

C	%	0,08 maximum
Cr	%	18,00 - 20,00
Fe	%	66,34 – 74,00
Mn	%	2,00 maximum
Ni	%	8,00 – 10,50
P	%	0,045 maximum
S	%	0,03 maximum
Si	%	1,00 maximum

STAINLESS STEEL TECHNICAL SPECIFICATIONS

Standard	EN ISO 3651/2-A EN ISO 3651/2-B
Melting temperature	1400°C
Tensile strength	650 Mpa
Elongation (5) (50 mm)	% 45
Hardness (HB)	90
Density	8 Kg / dm³
Elasticity modulus	200 Gpa
Heat conductivity	16,2 W/m/K
Dilatation coefficient	16,9 µm/m/K
Electrical resistance (20°)	72 microhm*cm
Corrosion resistance	According to EN ISO 3651/2-A